



March 11, 2021

Federal Highway Administration
C/O Rodolfo Monge-Oviedo
4001 Office Court Dr., Suite 801
Santa Fe, NM 87507
Via email: Rodolfo.Monge-Oviedo@dot.gov

Dear Mr. Monge-Oviedo,

As required by 23 U.S.C 167(g), and other pertinent Federal regulations, the table on the following page identifies critical urban and rural freight corridors in New Mexico in accordance with the current Federal Highway Administration (FHWA) guidance covering the designation and certification requirements.

CRITICAL URBAN AND RURAL FREIGHT CORRIDOR (CUFC AND CRFC) CERTIFICATE

I hereby certify that the public roads listed in the table on the following page meet the requirements of 23 U.S.C. 167(e) as designated CUFC and CRFC routes and connectors.

I further certify that the length in centerline mileage is accurate and does not exceed the maximum mileage limit and that the New Mexico Department of Transportation (NMDOT) coordinated with the appropriate stakeholder groups, including Metropolitan Planning Organizations (MPOs), to determine the list of freight corridors proposed for designation. I also certify that the freight corridors will be incorporated into the State Freight Plan prior to FHWA authorizing the use of Federal funds.

Sincerely,

Michael Sandoval (Mar 12, 2021 07:48 MST)

Michael R. Sandoval
Cabinet Secretary

**Michelle Lujan
Grisham**
Governor

Michael R. Sandoval
Cabinet Secretary

Commissioners

Jennifer Sandoval
Commissioner, Vice-Chairman
District 1

Bruce Ellis
Commissioner
District 2

Hilma E. Chynoweth
Commissioner
District 3

Walter G. Adams
Commissioner, Chairman
District 4

Thomas C. Taylor
Commissioner
District 5

Charles Lundstrom
Commissioner, Secretary
District 6

March 11, 2021

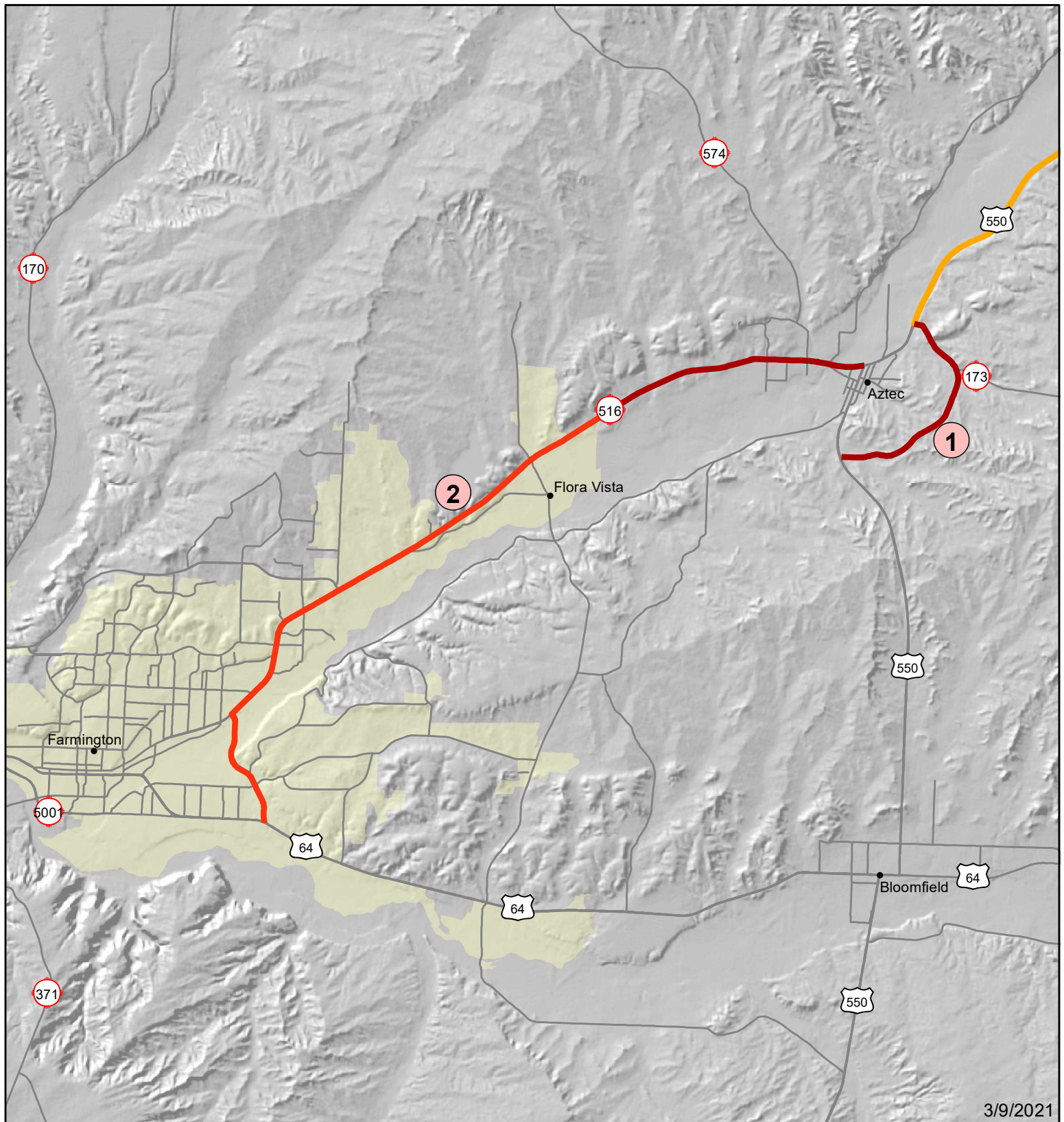
New Mexico Critical Urban and Rural Freight Corridor Nomination Table

##	State	Route No.	Start	End	Length (U)	CUFC_ID	Length (R)	CRFC_ID
1	NM	Aztec Arterial	0	3.60			3.60 miles	G
2	NM	NM 516	0	14	9.6 miles	K	4.4 miles	G
3	NM	US 84	161.9	163	1.1 miles	K		
4	NM	NM 466	0	1.75	1.75 miles	K		
5	NM	NM 14	52.04	53.71	1.67 miles	K		
6	NM	US 54	0	11.33			11.33 miles	G
7	NM	NM 213	0	3	3 miles	K		
8	NM	NM 273	0	9.5	9.5 miles	K		
9	NM	Strauss Rd, Santa Teresa	0	5.15	5.15 miles	H, K		
10	NM	US 70	149.1	150	0.9 mile	K		
11	NM	US 70	151	162	11 miles	K		
12	NM	Paseo del Norte, ABQ	Rainbow Blvd	Calle Nortena	2.2 miles	K		
13	NM	NM 500	3.16	3.74	0.58 mile	K		
14	NM	NM 500	8.9	9.9	1 mile	K		
15	NM	NM 6	23.6	32.6	2.45 miles	K	6.55 miles	G
Total miles proposed (urban)					50.72 miles		25.88 miles	Nominated
							157.05 miles	Approved
							182.93 miles	New Total

On November 4, 2020, Federal Highways Administration, New Mexico Division, approved the designation of 9 Critical Rural Freight Corridors (CRFCs), for a total of 157.05 centerline miles. This nomination adds 13.2 centerline miles of CRFC, and nominates the first designation of Critical Urban Freight Corridor (CUFC) centerline miles.

New Mexico is allocated 101.16 miles of CUFC, and 202.32 miles of CRFC, and as detailed above, this nomination is under those maximum mileage limits.



Critical Freight Corridor Nominations



Farmington MPO




Legend

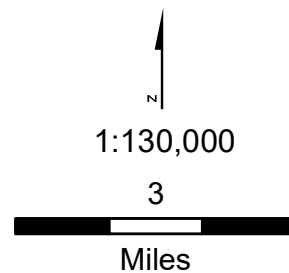
Critical Freight Network (proposed)

-  Critical Rural Freight Corridor
-  Critical Urban Freight Corridor

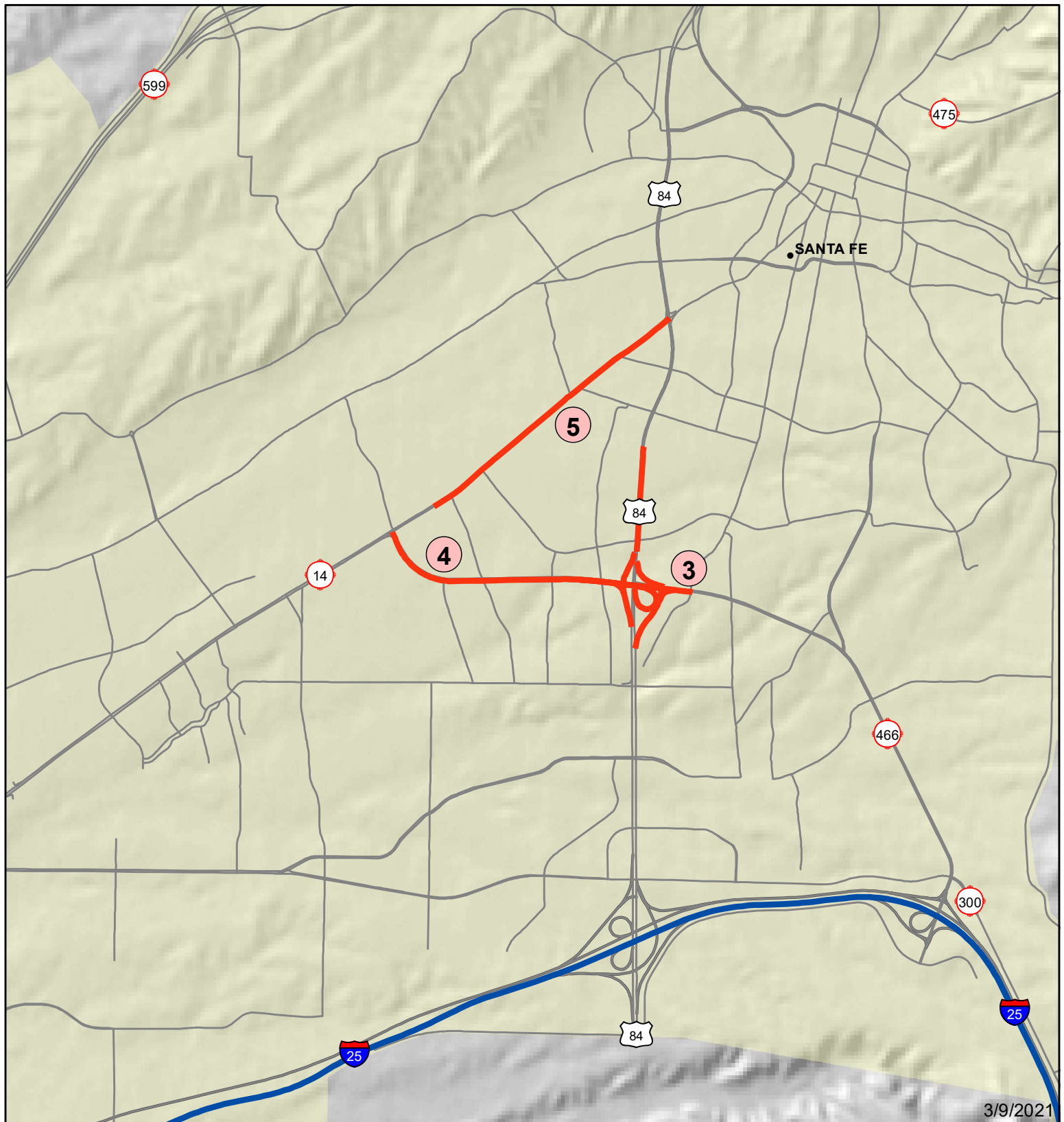
Critical Freight Network (existing)

-  Critical Rural Freight Corridor

-  Other Routes
-  Urbanized Area
-  Counties



Critical Freight Corridor Nominations



Santa Fe MPO

Legend

Critical Freight Network (proposed)

Critical Urban Freight Corridor

Critical Freight Network (existing)

Primary Highway Freight System

Other Routes

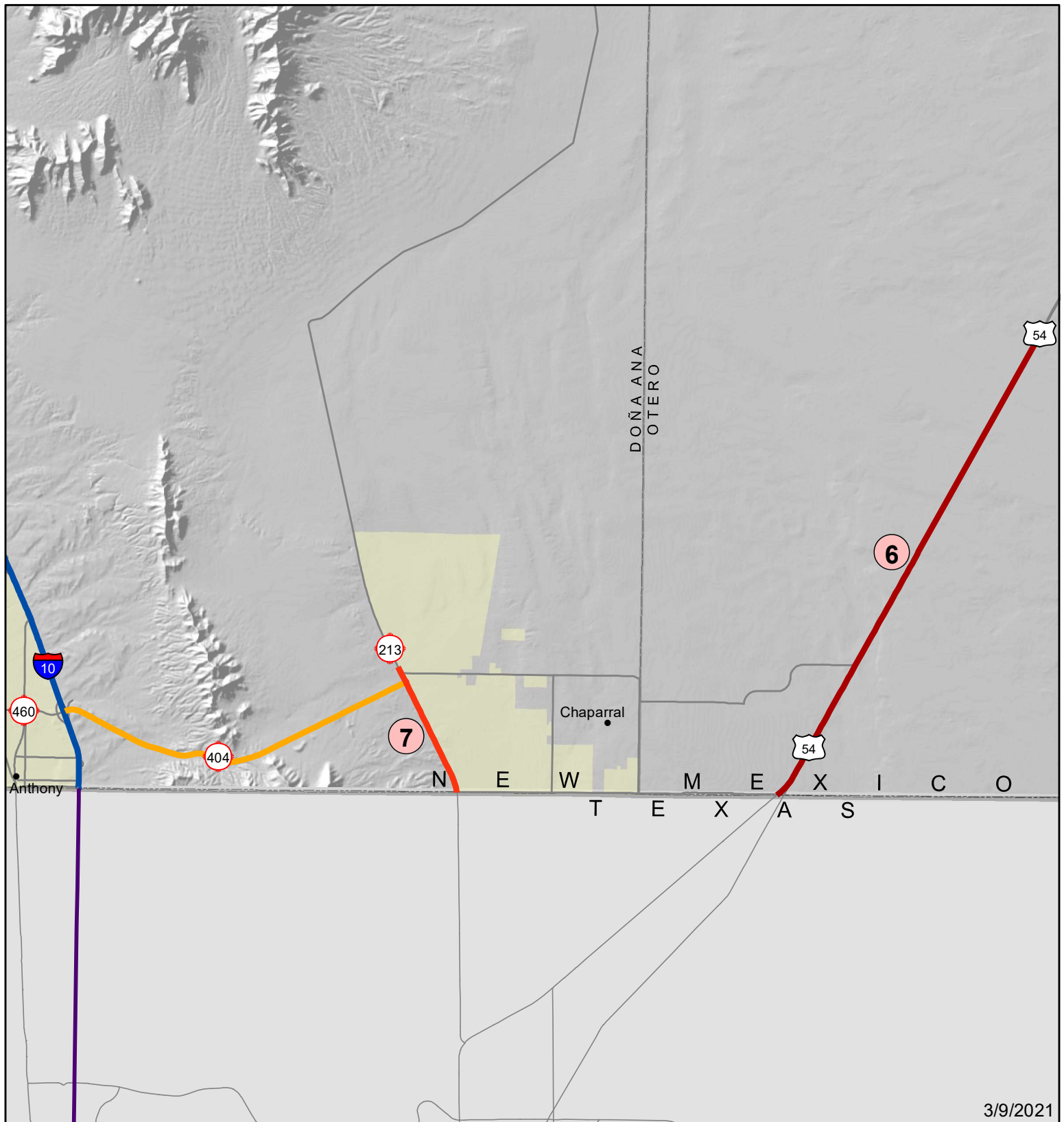
Urbanized Area

Counties

1:40,000
1
Miles



Critical Freight Corridor Nominations



Legend

Critical Freight Network (proposed)

Critical Rural Freight Corridor

Critical Urban Freight Corridor

Critical Freight Network (existing)

Primary Highway Freight System

Critical Rural Freight Corridor

Other Routes

TxDOT National Highway Freight Network

Urbanized Area

Counties

El Paso (North) MPO

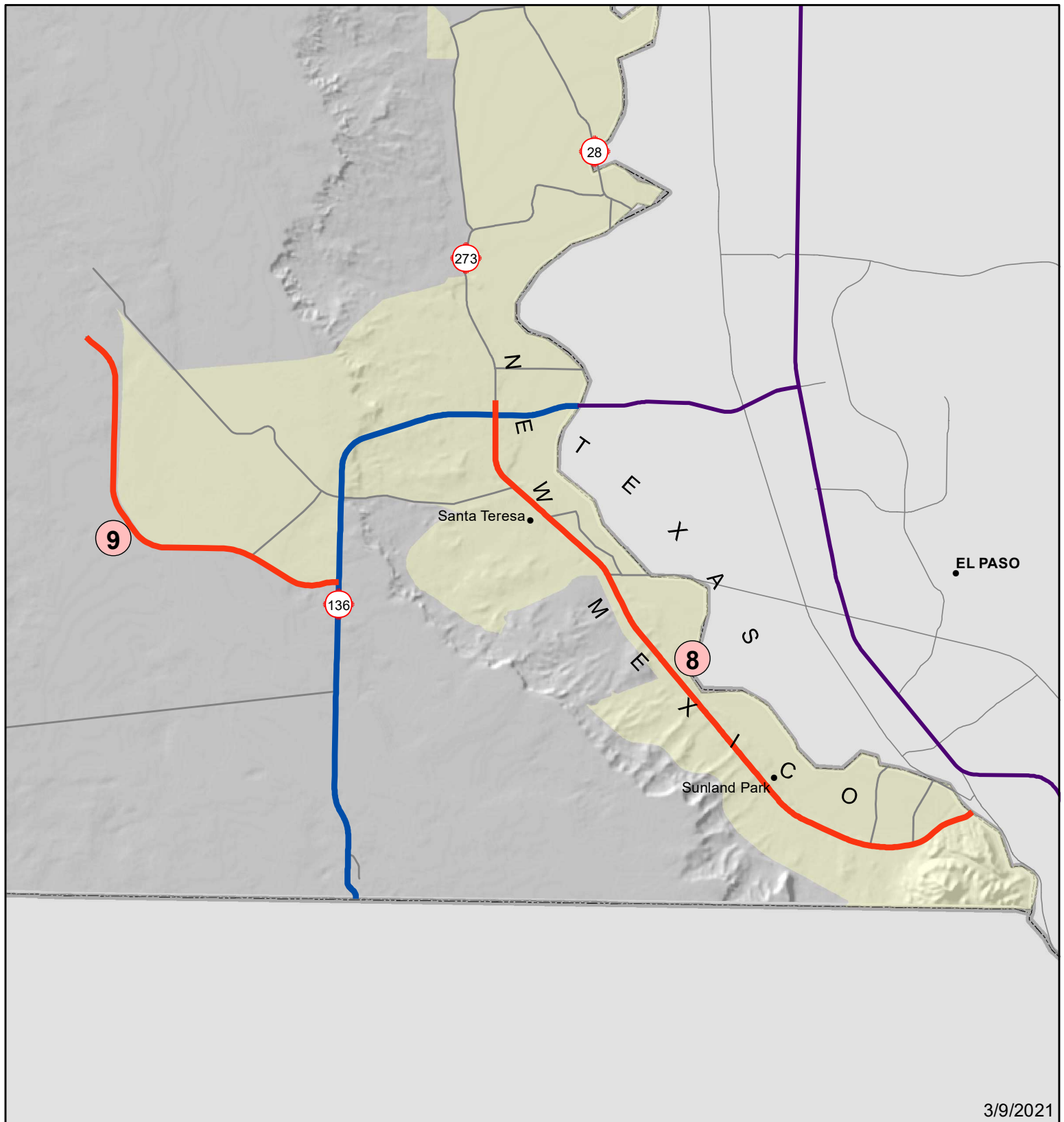
1:180,000

4

Miles



Critical Freight Corridor Nominations



El Paso (South) MPO

Legend

Critical Freight Network (proposed)

Critical Urban Freight Corridor

Critical Freight Network (existing)

Primary Highway Freight System

Other Routes

TxDOT National Highway Freight Network

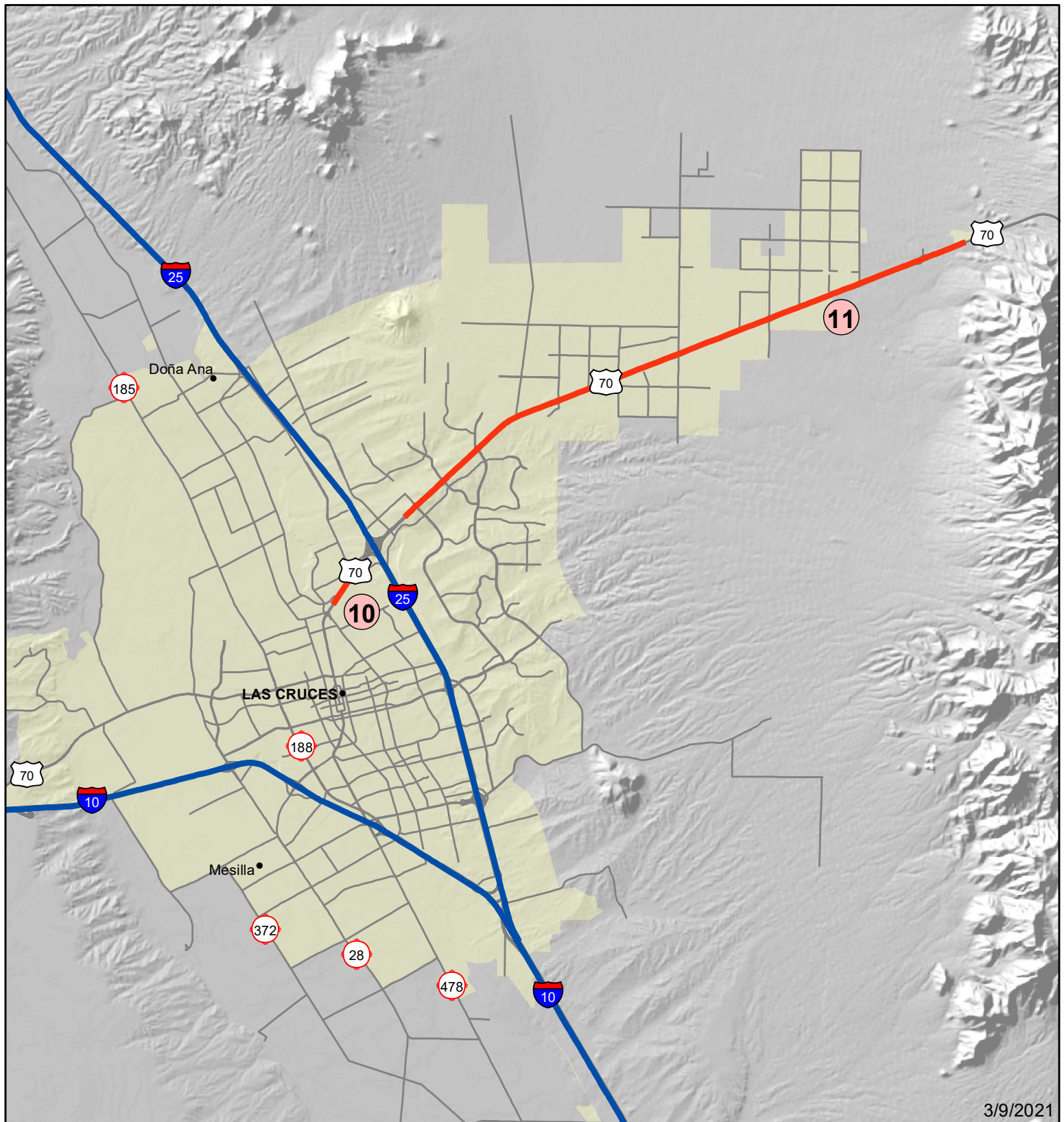
Urbanized Area

Counties

1:110,000
2
Miles



Critical Freight Corridor Nominations



Mesilla Valley MPO

Legend

Critical Freight Network (proposed)

— Critical Urban Freight Corridor

Critical Freight Network (existing)

— Primary Highway Freight System

— Other Routes

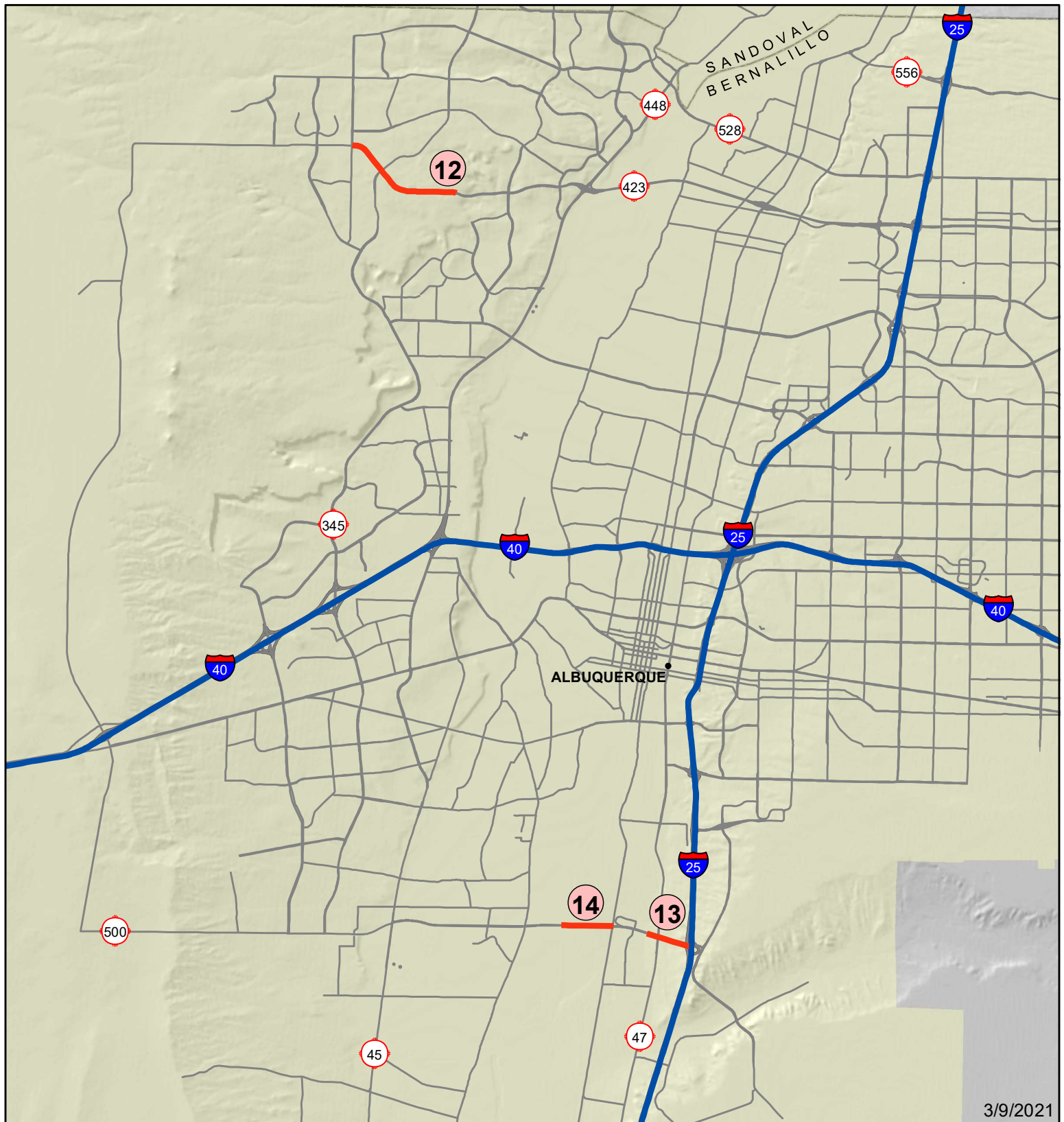
Urbanized Area

Counties

1:140,000
3
Miles



Critical Freight Corridor Nominations



Middle Region (Central) MPO

Legend

Critical Freight Network (proposed)

Critical Urban Freight Corridor

Critical Freight Network (existing)

Primary Highway Freight System

Other Routes

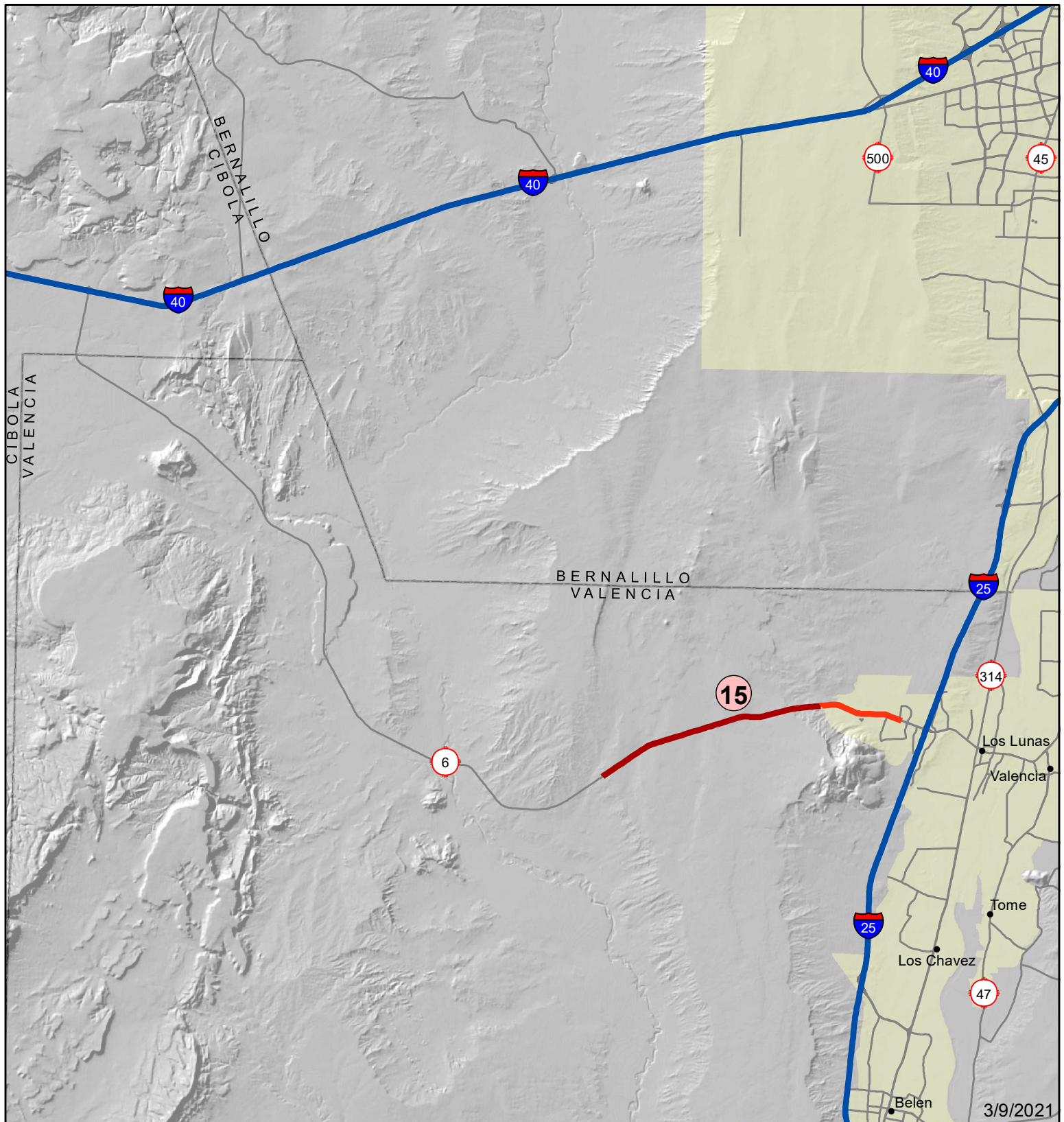
Urbanized Area

Counties

1:120,000
2
Miles



Critical Freight Corridor Nominations



Middle Region (South) MPO

Legend

Critical Freight Network (proposed)

Critical Rural Freight Corridor

Critical Urban Freight Corridor

Critical Freight Network (existing)

Primary Highway Freight System

Other Routes

Urbanized Area

Counties

